

ACTS & FACTS

INSTITUTE FOR
CREATION RESEARCH

www.icr.org

FEBRUARY 2015

VOL. 44 NO. 2

Was Leviathan Real?

page 15

Dinosaur Fossils in Late-Flood Rocks

page 16

From Atheist to Creationist

page 20

God's Lovingkindness and Truth

page 5



UNLOCKING THE MYSTERIES OF GENESIS



Groundbreaking 12-DVD series
now at this special price!

\$99.00

DUTMG

Plus shipping and handling.

For a limited time only.

Includes one viewer guide—
additional viewer guides sold separately.

Outstanding DVD values. Your choice \$9.99 each!

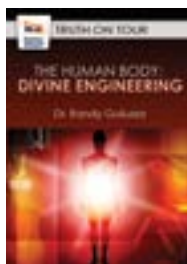


NEW!

That's a Fact

\$9.99 – DTAF

Sixteen *That's a Fact* video shorts packaged together in one educational DVD. Episodes include *Throwing a Strike*, *Language Families*, *Dinosaurs and Humans*, *Our Young Universe*, *Extraterrestrial Life*, *Dinosaurs on Noah's Ark?*, *Echolocation*, and more (28 minutes).



NEW!

The Human Body: Divine Engineering

Dr. Randy Guliuzza

\$9.99 – DTHBDE

Evolutionists say any appearance of design in nature is just an illusion. But how does that stack up to reality? Dr. Randy Guliuzza, a professional engineer and medical doctor, explores the wonders of the human hand (about 60 minutes).



NEW!

The Ice Age: Real and Recent

Dr. Jake Hebert

\$9.99 – DTIARAR

Does an ice age fit with biblical history? ICR's Dr. Jake Hebert explains how the assumption of millions of years is built into secular dating methods. In truth, the scientific evidence shows that while secular science fails to explain the Ice Age, the Bible provides real answers (about 60 minutes).

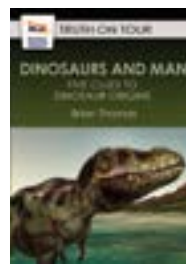


The Secret Code of Creation

Dr. Jason Lisle

\$9.99 – DTSCOC

Dr. Jason Lisle shows how fractals—types of structures that repeat infinitely in smaller and smaller scales—couldn't possibly have resulted from evolution. Fractals' intricacy reflects the infinitely powerful mind of the Creator (48 minutes).

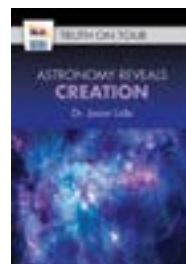


Dinosaurs and Man: Five Clues to Dinosaur Origins

Brian Thomas

\$9.99 – DDAMFCTDO

In this update to *What You Haven't Been Told About Dinosaurs*, ICR's Brian Thomas provides five clues from rocks, fossils, ancient documents, and Scripture itself that point to the recent creation and co-existence of dinosaurs and man (about 60 minutes).



Astronomy Reveals Creation

Dr. Jason Lisle

\$9.99 – DARC

Many people use astronomy to challenge Scripture, but what do the heavens actually reveal? Dr. Jason Lisle explores five "secrets of the cosmos" to confirm the Bible is right when it talks about astronomy, the age of the universe, the uniqueness of Earth, and the issue of distant starlight (62 minutes).



Human Design: The Making of a Baby

Dr. Randy Guliuzza

\$9.99 – DHDTMOAB

Tastefully presented, Dr. Randy Guliuzza explores the complexities of human reproduction to demonstrate that life's integrated biological systems couldn't possibly have evolved (65 minutes).

Please add shipping and handling to all orders.

Prices good through February 28, 2015.

To order, visit **ICR.org/store** or call **800.628.7640**.



INSTITUTE FOR
CREATION
RESEARCH



Published by
INSTITUTE FOR CREATION RESEARCH
P. O. Box 59029
Dallas, TX 75229
214.615.8300
www.icr.org

EXECUTIVE EDITOR
Jayme Durant

SENIOR EDITOR
Beth Mull

EDITORS
Michael Stamp
Truett Billups

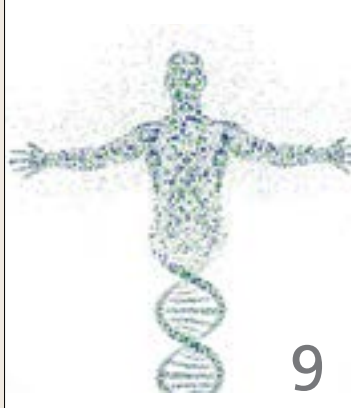
DESIGNER
Dennis Davidson

No articles may be reprinted in whole or in part without obtaining permission from ICR.

Copyright © 2015
Institute for Creation Research



5



9



14



15



17

FEATURE

5 God's Lovingkindness and Truth
HENRY M. MORRIS III, D. MIN.

BioORIGINS PROJECT UPDATE

9 Purpose, Progress, and Promise, Part 5
NATHANIEL T. JEANSON, PH.D.

IMPACT

10 Alkali Metal Dating, Rb-Sr Dating Model: Radioactive Dating, Part 4
VERNON R. CUPPS, PH.D.

BACK TO GENESIS

14 Optimized Design Models Explain Biological Systems
JEFFREY TOMKINS, PH.D.

15 Was Leviathan Real?
BRIAN THOMAS, M.S.

16 Dinosaur Fossils in Late-Flood Rocks
TIM CLAREY, PH.D.

CREATION Q & A

17 Does Teaching Recent Creation Hinder the Gospel?
BRIAN THOMAS, M.S.

APOLOGETICS

18 Forensic Science Frustrated by "Peer Review"
JAMES J. S. JOHNSON, J.D., TH.D.

STEWARDSHIP

19 Built and Guarded by God
HENRY M. MORRIS IV

20 Creation Conversion: From Atheist to Creationist
JERRY BERGMAN, PH.D.



Little Lights

“Turn in your Bibles to Luke 17,” the pastor said as he began his sermon. I was visiting my son’s church, near a college campus. “Read along with me, beginning at...” From my vantage point in the balcony something below caught my attention. Little lights dotted the auditorium. Dozens of people in the congregation held their cell phones while swiping their thumbs across illuminated displays as the preacher read the Word of God.

I not only saw phones but also e-readers, tablets, and fingers pecking away at thin-line laptop keyboards. These tech-savvy churchgoers were taking notes—all serious about learning God’s truth.

I had a nostalgic moment, thinking about how I often heard pastors comment on the sweet sound of onionskin paper rustling through a church auditorium when they took the pulpit. I envisioned spiral-bound journals and scrawled notes in Bible margins. But today, I saw little lights and was reminded that this generation of church attendees comes from a different era.

And while this crowd was serious about the Word of God, they were comfortable reading it in a nontraditional format. Same Word. Same message. A different generation. A different approach. This generation expects information at their fingertips—even the very Word of God.

As we’ve shared many times over the past few years, ICR is committed to reaching this generation. We understand

that they probably won’t go back to onionskin paper, so we’re looking for creative ways to reach them where they are. Over the next year, we’ll attempt new things, explore new options, offer new resources, and share our latest research. But you can be sure that we’ll hold fast to the unchanging message of God’s Word.

In this issue, we balance the message of Scripture with scientific research, and we once again see that science affirms Scripture. Dr. Henry Morris III encourages us to remember God’s lovingkindness and truth (pages 5-7), and Dr. Nathaniel Jeanson highlights results of new DNA research so significant that “the burden of proof has swung away from creationists and now falls on the evolutionary community” (page 9).

Because this contemporary generation has been raised in a culture that embraces evolution, ICR recognizes the importance of exposing false assumptions and providing authoritative answers from both science and Scripture. Brian Thomas says, “When Christians believe in a recent creation, they show complete confidence in the accuracy and authority of all of God’s Word, including its history” (page 17).

And Henry Morris IV recalls our founder’s great reverence for the Word: “ICR still follows the distinctive tenets established by my grandfather and built on the perfect Word of God. God has guarded our mission in the years that followed him and has guided our leadership as we remain true to His Word” (page 19).

Many of us grew up with the sound of onionskin paper turning at the beginning of a sermon.

Now, we can anticipate the flashing of little lights throughout the auditorium.

But whether you sit in a congregation full of those who read it on paper or on digital devices, you can have the confidence that God’s Word is “a light to [our] path” and can always be trusted (Psalm 119:105).

Jayme Durant

Jayme Durant
EXECUTIVE EDITOR



God's Lovingkindness *and* Truth

H E N R Y M . M O R R I S I I I , D . M I N .

God's loving care is a great and expansive theme throughout the Bible. Many of the Psalms cite incidences of God's faithful help, provision, deliverance, or other evidence that He remains true to His promises and character. In Psalm 138, David directs our focus to two great pillars of God's nature—His lovingkindness and His truth.

Psalm 138:1-2

I will praise You with my whole heart;
Before the gods I will sing praises to You.
I will worship toward Your holy temple,
And praise Your name
For Your lovingkindness and Your truth;
For You have magnified Your word above all Your name.

Praise and worship are not often connected together in the same passage as they are in Psalm 138:2. Both concepts are widely found in Scripture but are seldom used to describe the same actions. "Worship" is used to describe an attitude of obeisance and reverence, usually by bowing or prostrating, during a formal act of sacrifice or some other structured observance, as in the idol worship forbidden by the Second Commandment (Exodus 20:4-5). "Praise," especially as used in Psalm 138, emphasizes joyous thanksgiving as a result of receiving or recognizing God's specific blessing or God's worthiness in character, power, deed, or authority.

There are only two events recorded in Scripture in which the people of God both worshiped and praised at the same time. The first was at the dedication of the great temple that Solomon built. When Solomon finished his prayer of dedication, the fire of God's glory descended on the temple and entered the Holy of Holies. The effect of such an awesome sight was that the people "bowed their faces to the ground on the pavement, and worshiped and praised the LORD" (2 Chronicles 7:3).

The second event occurred during the time of Ezra, right after the return of a remnant from Babylon. The people heard the Word

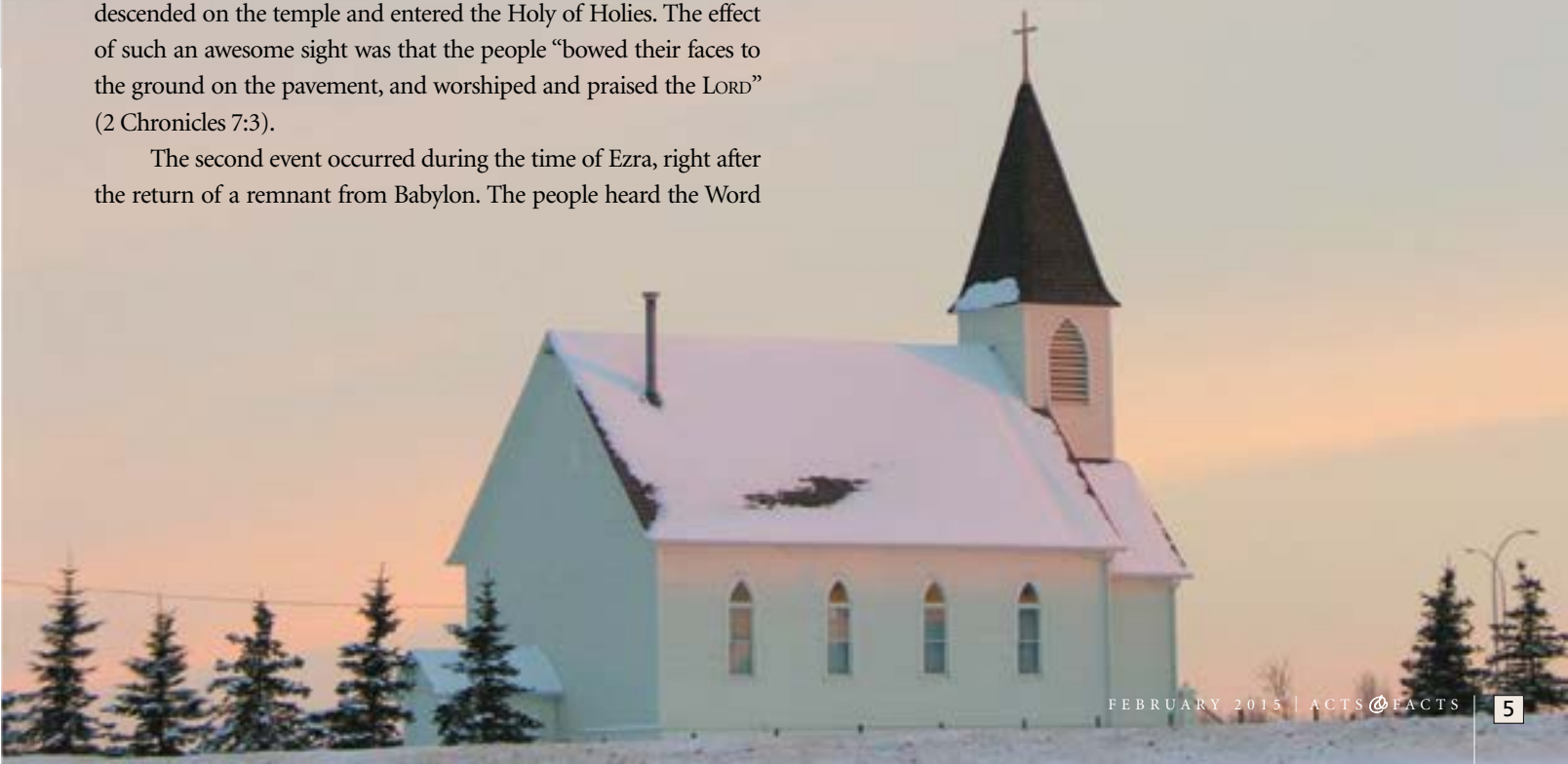
read to them for the first time in many decades and were trying to celebrate the "festival of booths" properly. During the reading of the Scriptures, the people became so convicted of their disobedience that they began to cry and confess their sin. Ezra told them that the festival was to be one of great joy. The mixed emotions (the festival went on for several days) were such that on one day they stood for about three hours and "confessed [same word as "praise"] and worshiped the LORD their God" (Nehemiah 9:3).

The common factor in both events was their serious and awesome character. Neither of these were ordinary church services. Something supernaturally special occurred. God made Himself very evident—in the one case through a breathtaking display of His power, in the other through an extraordinary moving of His Spirit. In neither case were the people moved to jump up and down, clap, or otherwise demonstrate exuberance; they were so overwhelmed at the presence of God that they fell down on their faces! Yet the reality of God was so personal that they praised (thanked, confessed); they poured out their hearts in intimate thanksgiving to the Lord. This is how we should understand this psalm.

Worship and praise for His lovingkindness. Worship and praise for His truth. Worship and praise in His temple—where His name resides. Worship and praise *the* name, His being, His attributes.

Worship and praise *because* God has magnified His Word above all His name.

Such an unusual statement! God has, Himself, placed such a value on His Word that the Word is to be magnified above His name itself. It is imperative that we gain a perspective from which to view



this principle. The name of Jesus is so great that...

Therefore God also has highly exalted Him and given Him the name which is above every name, that at the name of Jesus every knee should bow, of those in heaven, and of those on earth, and of those under the earth, and that every tongue should confess that Jesus Christ is Lord, to the glory of God the Father. (Philippians 2:9-11)

The Word of God is to be magnified beyond the name of Jesus Christ. It is worthy of note that the Third Commandment (Exodus 20:7) demands we treat God's name with such honor that we not consider it "vain" (useless, destructive, profane). God has placed such a high value on His Word that we must approach its use with reverential precision and holy awe.

Every word of God is pure;...Do not add to His words, Lest He rebuke you, and you be found a liar. (Proverbs 30:5-6)

Forever, O LORD, Your word is settled in heaven. (Psalm 119:89)

"So shall My word be that goes forth from My mouth; It shall not return to Me void, But it shall accomplish what I please, And it shall prosper in the thing for which I sent it." (Isaiah 55:11)

"Heaven and earth will pass away, but My words will by no means pass away." (Matthew 24:35)

"The Scripture cannot be broken." (John 10:35)

For all the promises of God in Him are Yes, and in Him Amen, to the glory of God through us. (2 Corinthians 1:20)

The point of the worship and praise herein demanded is that we understand that the answers to our prayers, the responses to our needs, even the supernatural deliverance from our disasters are "according to" God's Word (Psalm 119:9, 25, 28, 41, 58, 65, 76, 85, 91, 107, 116, 149, 156, 159, 169, 170).

Psalm 138:3

In the day when I cried out, You answered me,
And made me bold with strength in my soul.

God's responses to our prayers are delivered in two ways—practically, in the circumstance or in the direction, and spiritually, in the "inner man" (Ephesians 3:16). We are often so focused on the physical need or the external circumstance about which we are so insistently praying that when the answer is delivered from the Throne, we fail to receive the full blessing—even if we read the practical answer correctly. Our heavenly Father is committed to providing our needs on Earth (Philippians 4:19; Luke 12:30), but such supply must be understood as of minimal significance in the scope of eternity. The good thoughts (Jeremiah 29:11) and the good gifts of God (Luke 11:13) are toward the expected end—our ultimate conformity "to the image of His Son" (Romans 8:29).

While God will and does respond to our physical circumstances and needs, His heart and purpose are to fill us "with all the fullness of God" (Ephesians 3:19). He blesses us "with every spiritual blessing" (Ephesians 1:3) and has chosen us to be "holy and without blame"

(Ephesians 1:4). God's Word is designed to make us participate in the "divine nature" (2 Peter 1:4). Therefore, God's desire is...

That you may be filled with the knowledge of His will in all wisdom and spiritual understanding; that you may walk worthy of the Lord, fully pleasing Him, being fruitful in every good work and increasing in the knowledge of God; strengthened with all might, according to His glorious power, for all patience and longsuffering with joy; giving thanks to the Father who has qualified us to be partakers of the inheritance of the saints in the light. (Colossians 1:9-12)

But this private, internal, and spiritual worship and praise must have an outlet! No one who experiences the blessings of God in their lives to the extent that the psalmist is describing can keep it private. There *will* be public testimony.

Psalm 138:4-5

All the kings of the earth shall praise You, O LORD,
When they hear the words of Your mouth.
Yes, they shall sing of the ways of the LORD,
For great is the glory of the LORD.

Please notice that "the kings" will respond in praise. They will sing of God's ways. When the wonderful works of God are manifested to us or in us, the resulting testimony brings about a praise response from those hearing of God's action. These testimonies never produce praise for the one giving the testimony. They make those hearing the testimony praise God! Jesus taught us that if we learn to love each other as He loved us, then the whole world will know that we are His disciples (John 13:34-35). Solomon let us know that if we would follow the instructions of Scripture, even our enemies would be at peace with us



(Proverbs 16:7). Everybody in Jerusalem was aware of the powerful witness of the early church (Acts 4:33).

When we are so affected by the working of God in our lives that we worship and praise, others will know about it and will talk about it to God's glory.

Psalm 138:6-8

Though the LORD is on high,
Yet He regards the lowly;
But the proud He knows from afar.
Though I walk in the midst of trouble, You will revive me;
You will stretch out Your hand
Against the wrath of my enemies,
And Your right hand will save me.
The LORD will perfect that which concerns me;
Your mercy, O LORD, endures forever;
Do not forsake the works of Your hands.

David's closing application and testimony are finally delivered to his readers. He makes three simple points.

First, God loves His Saints, but those with a pride problem are not going to gain His attention. This is somewhat basic to Christian doctrine. Pride is one of the seven things that God hates (Proverbs 6:16-19). The desire of the humble person is what God responds to (Psalm 10:17). The Lord stays near to those who have a broken heart or a contrite spirit (Psalm 34:18).

Second, God will revive us when we are in trouble. The promise is about the reviving and the saving. That is, we may gain God's sufficient grace to endure (as in the case of Paul's "thorn in the flesh," 2 Corinthians 12:7) rather than a physical cure. We may receive the ability to be victorious in the face of opposition (as during Paul's ministry to Ephesus,

1 Corinthians 16:8-9) rather than relief from the circumstances. We may, indeed, be delivered from the pressure of enemies or have God's miracle performed in our lives, but whatever the circumstantial occasion, God will respond for our good.

Thirdly, God will bring about our "perfection." That term, both in the Old and the New Testaments, relates to the completion of God's work or purpose. Here it is specifically related to "that which concerns" the saints of God. God will see to it that His "chosen" will make it. There is no question about this. God's mercy is always refreshed. There is no limit to His forgiveness. Nothing about who I am will defeat God's plan for me. Everything has been taken care of. God will not drop the ball.

"You did not choose Me, but I chose you and appointed you that you should go and bear fruit, and that your fruit should remain."
(John 15:16)

And we know that all things work together for good to those who love God, to those who are the called according to His purpose. (Romans 8:28)

For we are His workmanship, created in Christ Jesus for good works, which God prepared beforehand that we should walk in them. (Ephesians 2:10)

Being confident of this very thing, that He who has begun a good work in you will complete it until the day of Jesus Christ. (Philippians 1:6)

Work out your own salvation with fear and trembling; for it is God who works in you both to will and to do for His good pleasure. (Philippians 2:12-13)

He who calls you is faithful, who also will do it. (1 Thessalonians 5:24)

Oh, Lord God. We cannot know the end of a thing. We do not have certainty about the plans of our days. Forgive us when we try without consulting You. Forgive our blundering efforts to make something happen. We do love You, and we want to please You, but our lives are so caught up in the things of this world. Help us, Lord. Help us to know how much we need You. Help us to see the real value of eternal things. Give us a greater awareness of Your Holy Spirit. Give us a holy awe of Your Word. Drive us to our knees more often, Lord. Keep us close.

Oh, our Father. Purge us from ungodliness. Separate us from the sins that hinder and blind. Meet us in the halls of our heart and sanctify us there.

And then, Lord Jesus, embolden us for the work ahead. Provide our daily bread. Cleanse our sins and enrich our fellowship with the saints. Clothe us in the armor of God and place us where we must stand. Enable us to resist the Enemy in the faith, see his strongholds crumble and his minions flee. Grant a fruitful harvest and an effective ministry, in Jesus' name. Amen. ●



Dr. Morris is Chief Executive Officer of the Institute for Creation Research.

▶ **FEBRUARY 1**

Marshall, TX
Crossroads Baptist Church
(B. Thomas) 903.938.0882

▶ **FEBRUARY 3**

Farmers Branch, TX
Metroplex Institute of Origin
Science
(B. Thomas)

▶ **FEBRUARY 6-7**

Diamond Bar, CA
Calvary Chapel Golden Springs
(H. Morris III, J. Lisle, B. Thomas)
909.396.1884

▶ **FEBRUARY 6-8**

Mercersburg, PA
Fellowship of Bible Churches
Winter Retreat at Camp Tohiglo
(R. Guliuzza, F. Sherwin)
717.597.8127

▶ **FEBRUARY 8**

Whittier, CA
Morningstar Christian Chapel
(J. Lisle) 562.943.0297

▶ **FEBRUARY 8**

Marshall, TX
Crossroads Baptist Church
(J. Hebert) 903.938.0882

▶ **FEBRUARY 8**

Dallas, TX
First Baptist Dallas Discipleship
University
(H. Morris III) 214.969.0111

▶ **FEBRUARY 15**

Dallas, TX
First Baptist Dallas Discipleship
University
(H. Morris III) 214.969.0111

▶ **FEBRUARY 22**

Dallas, TX
First Baptist Dallas Discipleship
University
(H. Morris III) 214.969.0111

▶ **FEBRUARY 26**

Hillsboro, TX
Central Baptist Church
(H. Morris III) 214.918.8388

▶ **FEBRUARY 27**

Austin, TX
Concordia University Texas
(B. Thomas) 512.313.5408

February 6-8
Creation vs. Evolution

Fellowship of Bible Churches Winter Retreat



Randy Guliuzza



Frank Sherwin



10670 Fort Loudon Rd. • Mercersburg, PA 17236
717.597.8127

For more information on these events or to schedule an event, please contact the ICR Events Department at **800.337.0375**, visit **www.icr.org/events**, or email us at **events@icr.org**

BioOrigins Project Update

Purpose, Progress, and Promise

Part 5

The first two articles of this series described the purpose and strategy of ICR's life sciences research.¹ Installments three and four surveyed the incredible gains our science team has made on the question of human origins.² The intense focus the secular community has placed on human genetics has produced a rich database of DNA sequence information that we have been mining. Our discoveries have been so remarkable that the burden of proof has swung away from creationists and now falls on the evolutionary community. Creationists can now make testable, accurate predictions in the realm of human genetics, and the evolutionary community has failed to produce convincing counter-explanations. A straightforward interpretation of human genetic data supports the origin of humanity from an initial couple who lived less than 10,000 years ago, instead of from a population of primates or proto-humans that lived in an ancient hypothetical past.³

What about the genealogical relationships among the millions of other species that live on Earth today? We know from Scripture that modern species trace their ancestry back to a set of separately created, unrelated *kinds*.⁴ But what has modern science revealed about who's related to whom?

Just as we found in the human realm, genetics is the key scientific tool in answering this question. In other words, other scientific fields do not have the ability to directly determine a species' genealogical heritage. For example, fossils can't record familial relationships. Even if we grant the evolutionists the time sequence they propose for the fossil record, the fact of a time sequence doesn't explicitly answer the ancestry question. George Washington lived before John F. Kennedy, but this simple time sequence doesn't imply that Washington was the direct progenitor of JFK.

Similarly, anatomical and physiological similarities also fail to trace family trees. While DNA encodes a species' anatomy and physiology, similar anatomies can be produced by dissimilar genetics. Finally, even *biogeography* (the geographical distribution of

species) fails to identify genealogical relationships. If you're sitting in a hall full of people, you are sharing the same geographical space with those next to you, but this fact says nothing about familial relationships. Because DNA—not a fossil, anatomical structure, or geographical location—is transmitted at the moment of conception, only DNA directly records a species' genealogy.

But figuring out what DNA tells us about the relationships among diverse species is an entirely different question. For example, ever since Darwin, evolutionists have referenced life—that organisms can be placed in overall groups based on their similarities and differences—as evidence for the shared genealogical relationships among all species. Modern genetics reflects this pattern, and this fact seems to confirm Darwin's original claim.

However, this "test" of evolution is actually a form of *pseudoscience* because the design hypothesis predicts the *same* classification pattern for life—certain creatures are similar by design, not because of common ancestry. Since true scientific tests must distinguish among competing hypotheses, the fact of a classification pattern in nature fails to eliminate the design hypothesis and therefore makes this "test" of evolution unscientific.⁵ So how can genetics reveal the true relationships among species? Read more about our progress in our next installment! ●

References

1. Jeanson, N. T. 2014. BioOrigins Project Update: Purpose, Progress, and Promise, Part 1. *Acts & Facts*. 43 (10): 13; Jeanson, N. T. 2014. BioOrigins Project Update: Purpose, Progress, and Promise, Part 2. *Acts & Facts*. 43 (11): 9.
2. Jeanson, N. T. 2014. BioOrigins Project Update: Purpose, Progress, and Promise, Part 3. *Acts & Facts*. 43 (12): 9; Jeanson, N. T. 2015. BioOrigins Project Update: Purpose, Progress, and Promise, Part 4. *Acts & Facts*. 44 (1): 9.
3. Tomkins, J. 2014. Genetic Entropy Points to a Young Creation. *Acts & Facts*. 43 (11): 16.
4. Jeanson, N. T. 2013. The Origin of Species: Did Darwin Get it Right? In *Creation Basics & Beyond: An In-depth Look at Science, Origins, and Evolution*. Dallas, TX: Institute for Creation Research, 125-131.
5. Jeanson, N. T. 2014. Darwin vs. Genetics: Surprises and Snags in the Science of Common Ancestry. *Acts & Facts*. 43 (9): 8-11.

Dr. Jeanson is Deputy Director for Life Sciences Research and received his Ph.D. in cell and developmental biology from Harvard University.



Because DNA—not a fossil, anatomical structure, or geographical location—is transmitted at the moment of conception, only DNA directly records a species' genealogy.

Alkali Metal Dating, Rb-Sr Dating

PART 4

The secret things belong unto the LORD our God: but those things which are revealed belong unto us and to our children forever, that we may do the words of this law.

(DEUTERONOMY 29:29)

VERNON R. CUPPS, PH.D.

Editor's note: We've received a wide range of responses to Dr. Vernon Cupps' recent radioactive dating Impact articles. Most readers appreciate the hard science, but many have struggled with the equations. The purpose of this series is to demonstrate in no uncertain terms that these dating methods do not prove that Earth is millions or billions of years old, as is often reported. To provide context for Part 4, below is a summary of the first three articles—all are available online.

Part 1: Clocks in Rocks?

There are significant problems with radioisotope dating in general. The critical closed-system assumption is not realistic—no system can remain unaffected by its environment over millions of years. Evolutionists appeal to radioactive dating because it appears to confirm the deep time their models demand, but the actual data don't match the evolutionary model.

Part 2: The Iconic Isochron

The isochron dating method gives erroneous ages for rock formations of known age. Specifically, rocks gathered from recently erupted Mt. Ngauruhoe in New Zealand gave isochron dates of between 270,000 years and 3.9 billion years—from rocks known to be less than 60 years old! The isochron model is only a hypothesis. Models, no matter how elegant their mathematics,

are only as good as their assumptions and how well they reproduce reality through observation and experimental data. The scientific method simply does not allow isochron-model dating to be presented as scientific fact.

Part 3: The Noble Clock

In addition to the unreasonable assumptions that form an integral part of all three K-Ar (potassium-argon) dating methods, there are many examples in which the methods give erroneous dates. The K-Ar model does not meet even the basic criteria of a scientific hypothesis. Researchers who use these dating methods to conclude that rock-sample dates are evidence of a millions- or billions-year-old Earth are not using a legitimate scientific method. The potassium-argon dating method—once heralded as a solid scientific method—has proven to be unreliable.

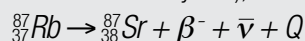
Model: Radioactive Dating

Using rubidium (Rb) decay as a clock to date minerals was first suggested by Otto Hahn and Ernst Walling in 1938. Five years later, Hahn performed the first age determination using this method.

Like potassium (K), rubidium is an alkali metal and therefore chemically behaves much like potassium. Physically, it has an ionic radius of 1.48 Å, which is close to potassium's (1.33 Å) and therefore should move within a crystal structure in a similar manner. This allows rubidium to readily substitute for potassium in all K-bearing minerals.

SIDEBAR A: Rubidium Decay

Rubidium is found as two naturally occurring isotopes, i.e., ^{85}Rb and ^{87}Rb with abundances of 72.1% and 27.83% respectively. Rubidium 85 is stable and ^{87}Rb beta decays to ^{87}Sr with a half-life of 4.7×10^{10} years¹ (Faure gives the half-life as 4.88×10^{10} years²);



where the decay energy (Q) of 0.275 MeV is shared between the beta particle and the anti-neutrino. The daughter nucleus into which ^{87}Rb decays, i.e., strontium 87, is a member of the Group IIA alkaline earth metal elements that include beryllium (Be), magnesium (Mg), calcium (Ca), barium (Ba), and radium (Ra). Like Ca, it typically exhibits a 2⁺ electronic state, i.e., it donates two electrons, in its interactions with other elements or molecules. Its ionic radius of 1.13 Å is only slightly larger than that of Ca^{2+} (0.99 Å), which means it can readily replace Ca in many minerals. Thus, while Rb and Sr are not as mobile as K and Ar, they are relatively mobile and can move freely in rock matrices.

Determining the half-life of Rb presents scientists with a challenge for two reasons. First is the extremely long half-life of Rb, and second is because Rb beta decays with a relatively small energy of 275 keV. During beta decay, the decay energy is shared; thus, the emitted beta particle has a spectrum of energies rather than a single unique energy, making direct detection of the beta particle difficult. From 1964 through 2012, seven attempts were made to directly measure the half-life of Rb. The results of these measurements have varied from $4.77 \pm 0.10 \times 10^{10}$ yrs. in 1964 to $4.967 \pm 0.032 \times 10^{10}$ yrs. in 2003. A value of 4.88×10^{10} yrs. is used by Gunter Faure and Teresa Mensing³ and is the current value recommended by the Union of Geological Sciences. Whether this decrease is real or simply due to better measurement techniques remains uncertain. In any case, there is some uncertainty in one of the critical parameters used by isochron dating models of Rb decay.

A little-advertised characteristic of rubidium-containing miner-

als is that they are moderately rare in nature.⁴ When they do occur in rock samples, they are usually in such small amounts that they cannot be seen without a microscope (see Figure 1). Therefore, separating the element from the rock sample is difficult. This makes mineral isochrons for the Rb-Sr decay sequence rare and is the reason most isochrons in the literature for this dating method use whole-rock isochrons.

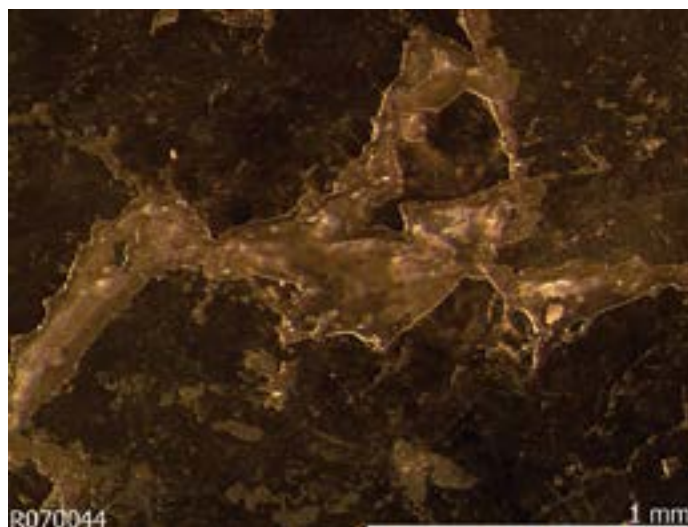


Figure 1. Rubicline crystal in a rock sample at approximately 100X magnification.

Image credit: ©2006 Downs, R. T. The RRUFF Project. Adapted for use in accordance with federal copyright (fair use doctrine) law. Usage by ICR does not imply endorsement of copyright holder.

SIDEBAR B: Rubidium Isochron

Since the original concentrations of ^{87}Rb and ^{87}Sr cannot be definitively known (i.e., we cannot go back in time to measure them), using this particular decay sequence for dating is almost always done using the isochron model. The equation describing how this model is implemented is:

$$\frac{{}^{87}\text{Sr}}{{}^{86}\text{Sr}} = \left(\frac{{}^{87}\text{Sr}}{{}^{86}\text{Sr}} \right)_0 + \left(\frac{{}^{87}\text{Rb}}{{}^{86}\text{Sr}} \right) (e^{\lambda t} - 1)$$

where the $^{87}\text{Sr}/^{86}\text{Sr}$ and $^{87}\text{Rb}/^{86}\text{Sr}$ ratios are measured in the present time and plotted on a graph. If the points approximate a straight line then the rock suite from which the samples were taken can represent either an isochron or a mixing line (i.e., a line with no special meaning in time).

If the straight line is interpreted to be an isochron with y-intercept of

$$\left(\frac{{}^{87}\text{Sr}}{{}^{86}\text{Sr}} \right)_0$$

and a slope of $m = (e^{\lambda t} - 1)$, then the projected age of the rock suite is given by:

$$t_a = \frac{1}{\lambda} \ln(m+1)$$

Rubidium-Strontium isochron for dunite specimen 72417
(Collected by Apollo 17 from the lunar highlands)

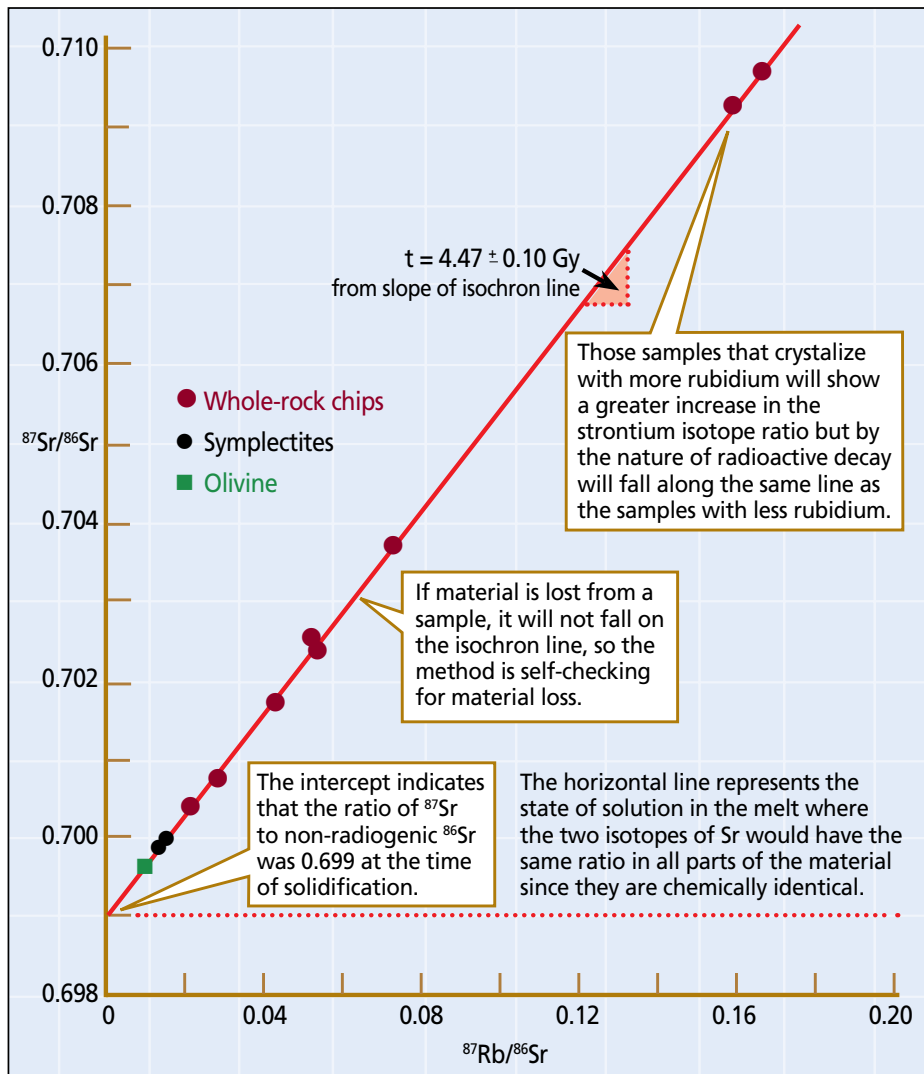


Figure 2. This is an example of an Rb-Sr isochron for lunar rock specimen 72417 from the lunar highlands. Note that the comments in the boxes focus the reader on the idealized situation in which all assumptions involved in the Rb-Sr method are rigorously met.

What are the critical assumptions that go into this dating method? One basic assumption that was outlined in a previous *Acts & Facts* article⁵—constant decay rates—is equally invalid for this dating method.

A second basic assumption, that the rock suite remains a truly closed system over millions of years, is simply not reasonable since both Rb and Sr are mobile and easily transported via diffusion or hydrothermal action in a rock suite. In addition, ^{86}Sr has a high neutron capture cross-section of 190 barns for thermal neutrons and thus can produce ^{87}Sr independent of the presence of ^{87}Rb ; it would not take much ^{87}Sr produced in this manner to seriously skew the age calculated by this method. The closed-system assumption probably does not hold for this dating method.

The third basic assumption is that the initial concentration of the daughter isotope can be derived by applying the isochron method to a group of rock samples in the present time. There are a number of critical secondary assumptions hidden in this third basic assumption:

- 1) The rock formation was sufficiently mixed that $m = 0$ can be assumed to be its initial condition.
- 2) ^{87}Sr can only be generated by the radioactive decay of ^{87}Rb during the entire life of the rock formation.
- 3) ^{87}Rb nuclei are only removed from the rock formation via their decay to ^{87}Sr .
- 4) The number of ^{86}Sr atoms/unit weight of the rock remains constant in time. This is critical since such small amounts of ^{87}Sr are involved.
- 5) The temperature of the rock formation, or any part of it, has never gone above the closure temperature for strontium or rubidium-containing minerals. This could result in the inheritance of isotopic ratios from heterogeneous source rock.

Assumptions 2 through 5 are related to the closed-system assumption and come into play in the Rb-Sr isochron methodology through assumptions made in deriving the time evolving linear equation fundamental to the method. All three isotopes used in this method— ^{86}Sr , ^{87}Sr , and ^{87}Rb —can be produced in a given rock suite by cosmogenic

processes. For example, ^{87}Sr can not only be produced by the neutron capture reaction on ^{86}Sr , it can also be produced by the (n,α) nuclear reaction on ^{90}Zr . This reaction has a much smaller cross-section ($\sim 25 \times 10^{-3}$ barns) than the (n,γ) reaction on ^{86}Sr , but even small amounts of ^{87}Sr generated by processes other than decay of ^{87}Rb will negate one of the basic assumptions upon which the whole methodology of Rb-Sr isochrons are built. ^{87}Rb can be converted to ^{88}Rb through the (n,γ) reaction (~ 310 barn cross-section), thus removing it from the rock matrix without decay to ^{87}Sr .

If the temperature of the rock formation goes above the closure temperature, then the strontium and rubidium atoms are essentially free to move within the rock formation and interact with their environment, thus disrupting the presumed initial isotope ratios. So

Evolutionists may claim that radioactive dating methods prove the earth's strata to be millions of years old, but they won't tell you that those methods are built on a house of cards that cannot bear the weight of scientific scrutiny.

essentially, this methodology assumes that all ^{87}Sr found in a rock formation above a level consistent with a baseline ratio to ^{86}Sr is generated by radioactive decay with no allowance for ^{86}Sr , ^{87}Sr , and ^{87}Rb being primordially present or generated by other processes.

Assumption 1 is directly related to our old friend the homogeneous assumption. As previously discussed,⁵ this assumption is critically flawed. If we assume that the rock formation cooled slowly enough for all elements within it to reach chemical and physical equilibrium, then the whole-rock samples of the formation should have the same concentrations of each element in a given sample. This applies not only to strontium but also to rubidium. Therefore, for a true isochron, the whole-rock samples should all fall at a single point, *not* a series of points. A single mineral should exhibit the same behavior. We can then conclude that an isochron can only be constructed from a group of different, separated minerals in the same rock formation that formed at the same time. Unfortunately, Faure points out that model dates derived from the analysis of separated minerals are generally unreliable.⁶ So, as pointed out above, most of the Rb-Sr isochrons in the literature are whole-rock isochrons. The fact that we can construct linear relationships from samples of current rock formations could just as easily have arisen from mixing that occurred as the rock solidified than from a reliable clock frozen in time for millions or billions of years.

So what does the observable evidence say about the Rb-Sr isochron dating method? New Zealand's Mt. Ngauruhoe example gave a Rb-Sr isochron date of over 133 million years to rock known to be less than 60 years old.⁷ Another example of rock from east Africa's Virunga Toro-Ankole region yielded an Rb-Sr isochron model age of 773 million years for rock known to be younger than five million years even from the secular viewpoint.⁸

Whole-rock and mineral Rb-Sr isochrons of granitic rocks from the northern Scottish Highland's Carn Chuinneag complex give ages of 548 ± 10 million years and 403 ± 5 million years respectively.⁹ This is about a 150 million-year difference—which one is correct?

Dr. Steve Austin dated the Grand Canyon Cardenas Basalt at between 0.98 ± 0.06 and 1.10 ± 0.05 billion years using the Rb-Sr isochron dating model. He also dated the Grand Canyon Uinkaret Plateau basaltic rocks at between 1.27 ± 0.04 and 1.39 ± 0.03 bil-

lion years using the Rb-Sr dating method.¹⁰ Other than the fact that the range of dates does not overlap within the stated error bars, it is interesting that the highest rock strata are dated to be at least eight million years *older* than the base level rock strata. This conflicts with the long-standing axiom of rock strata being indicative of geological ages.

Therefore, the assumptions the Rb-Sr isochron dating method is based on do not seem to be reasonable, and the predictions of this model do not coincide with observations. What can we conclude? Can we believe a model that does not reproduce the known ages of rocks is valid for dating rocks of unknown ages?

The most important thing we must remember about radioisotope dating is that the present-day measurements and observations are valid scientific facts. What is not valid scientific fact is the extrapolation of those measurements and observations into the past. If the many assumptions that go into extrapolating current measurements into the past are reasonable, and if they are verified by current observations, then they can, at best, be considered rational approximations to past events. But if the assumptions are not wholly reasonable and verifiable, then they cannot be used as reliable scientific dating methods. Evolutionists may claim that radioactive dating methods prove the earth's strata to be millions of years old, but they won't tell you that those methods are built on a house of cards that cannot bear the weight of scientific scrutiny. ●

References

1. ICRP. 1983. Radionuclide Transformations: Energy and Intensity of Emissions. *ICRP Publication 38. Annals of the ICRP*. 11-13.
2. Faure, G. 1986. *Principles of Isotope Geology*, 2nd ed. New York: John Wiley & Sons, 119.
3. Faure, G. and T. M. Mensing. 2005. *Isotopes: Principles and Applications*, 3rd ed. New York: John Wiley & Sons, 77.
4. Rubidium is found in easily detectable quantities only in the minerals ramanite, rubicline (see Figure 1), and voloshinite. Typically it takes EDS (energy dispersive spectroscopy) to detect even their presence in these crystals. This is why most Rb-Sr isochrons are of the whole-rock type.
5. Cupps, V. R. 2014. Clocks in Rocks? Radioactive Dating, Part 1. *Acts & Facts*. 43 (10): 10-13.
6. Faure, *Principles of Isotope Geology*, 124.
7. Snelling, A. A. 2003. The Relevance of Rb-Sr, Sm-Nd, and Pb-Pb Isotope Systematics to Elucidation of the Genesis and History of Recent Andesite Flows at Mt. Ngauruhoe, New Zealand, and the Implications for Radioisotopic Dating. *Proceedings of the Fifth International Conference on Creationism*. R. L. Ivey, Jr., ed. Pittsburgh, PA: Creation Science Fellowship, 285-303.
8. Faure, *Principles of Isotope Geology*, 146-147.
9. *Ibid*, 127.
10. Austin, S. A. 1994. *Grand Canyon: Monument to Catastrophe*. Santee, CA: Institute for Creation Research, 123,125.

Dr. Cupps is Research Associate at the Institute for Creation Research and received his Ph.D. in nuclear physics from Indiana University-Bloomington.



Biochemical networks, signaling cascades, and genomes in cells are complicated information processing systems that are key to all aspects of living organisms. An increasing body of research shows these systems are finely tuned and highly optimized. Unlike devices built by professional engineers, such as an automobile that needs regular servicing and replacement parts, these divinely created living systems are self-organized and sustained within the cell.

The formation of any biological or man-made system generally follows a basic engineering model with an end goal in mind. System components are needed to construct a network, critical space is allocated to accommodate those components, time is required to process the information, and energy is needed for every orchestrated step of network operation. These component entities are also resources that constrain the design and performance of any biochemical network in the cell.

must be allocated so that none are wasted. We show that the chemotaxis network of *Escherichia coli* obeys this principle.¹

In another study performed several years earlier, researchers compared the function of gene networks in *E. coli* to the man-made architecture of the Linux computer operating system.² Expressed (turned on) genes in *E. coli* were considered analogous to called computer programs in the Linux operating system. The researchers found that both the biological and computer systems had the hallmark of design principles, with three different levels of regulatory hierarchy:

- 1) master regulators
- 2) middle managers
- 3) bottom-level workhorse genes/programs

However, the similarity ended there. The genome of *E. coli* was found to be much more streamlined, efficient, and condensed in its information processing! Conversely, the man-made com-

Optimized Design Models Explain Biological Systems

When this basic but complex engineering model is applied to biological systems, researchers have found tremendous efficiency—none of the resources are wasted. In a recent study, the cell's systems were tested using the model bacterium *Escherichia coli* (*E. coli*). In the best-characterized cellular sensing system known to man, *E. coli*, the chemotaxis network was evaluated.¹

Chemotaxis is the movement of an organism in response to particular chemicals in the environment that its systems are specified to detect. It is fundamental to survival and activity in bacteria. These complex one-cell creatures must constantly monitor their environment to make critical adjustments—essentially, decisions about relocating, differentiating, proliferating, and even living or dying. In the study of the networks that allow chemotaxis to function, researchers stated:

To operate these networks, resources are required: time, protein copies, and energy. We present a theory for the optimal design of cellular sensing systems that maximize sensing precision given these resources. It reveals a new design principle, namely that of optimal resource allocation. It describes how these resources

puter system contained a much larger amount of called code producing a much smaller amount of end results. In fact, the Linux operating system was literally bloated with middle-level managers—much like many other inefficient man-made systems.

Evolutionists invoke selection and random processes to explain the complicated traits found in living organisms, but these theories have little predictive power when applied to real biological systems. However, research using design-based principles of prediction, even with a seemingly “simple” bacterium, are proving that cellular systems and genomes are not only far better explained by optimized engineering, but their systems far exceed the capabilities of mankind's own design genius. Clearly, these engineered works of vast intelligence are evidence of an omnipotent Creator as described in the Bible. ●

References

1. Govern, C. C. and P. R. ten Wolde. 2014. Optimal resource allocation in cellular sensing systems. *Proceedings of the National Academy of Sciences*. 111 (49): 17486–17491.
2. Yan, K.-K. et al. 2010. Comparing genomes to computer operating systems in terms of the topology and evolution of their regulatory control networks. *Proceedings of the National Academy of Sciences*. 107 (20): 9186–9191.

Dr. Tomkins is Research Associate at the Institute for Creation Research and received his Ph.D. in genetics from Clemson University.



WAS LEVIATHAN REAL?

Scripture describes leviathan as a titanic terror roaming the ancient seas. Was it real, and if so, what was it? Historical hints help answer these questions.

The most complete description of leviathan comes from Job 41 and includes these observations: It lived in the sea but sometimes came on shore, had a scaly hide that deflected spears, was huge and terrifying, breathed fire, left luminescent wakes, and had a neck, nose, and a mouth with terrorizing teeth. From Psalm 104 we learn that leviathan played around in ancient shipping lanes.¹

These historical hints from the Bible refute the idea that leviathan was a mythical creature being used as a literary metaphor. Metaphors don't deflect spears or scare the daylights out of onlookers. In fact, leviathan must have really done these things for God to meaningfully compare it to His own might. Identifying leviathan as a myth smuggles in the destructive idea that anything in Scripture could be interpreted as a myth. But since the Bible has proven itself true over centuries of scrutiny, the leviathan must have really lived.

Some Bible translation notes and even conservative commentaries identify leviathan as a crocodile. While crocodiles do match several of leviathan's attributes, they fall short of disrupting shipping lanes, breathing fire, generating luminescent wakes, being utterly unapproachable, and having impenetrable hides.

Since neither myth nor crocodile satisfies the Bible's specific description, could leviathan have been a creature that is now extinct? Creation scientists have searched for fossils that match leviathan but without much success. Ichthyosaurs looked like dolphins—too small for leviathan. Mosasaurs had huge toothy mouths and were 45 feet long, but their fossils don't indicate much of



a neck. And could their flippers have pulled their streamlined bodies onto shore like a leviathan? Plesiosaurs might have been large enough, and they had necks and nostrils, but their heads seem too small to convey the awe that leviathan's head did. Some suggest leviathan was like the super-croc *Sarcosuchus*. Perhaps so, but many remain unconvinced. Maybe no fossils of the created leviathan kind have yet been described.

However, leviathan bones may have been on display in ancient Rome. In his book *The Authenticity of the Book of Jonah*, historian Bill Cooper relayed a passage from Pliny the Elder's *Natural History*:

The bones of this monster, to which Andromeda was said to have been exposed, were brought by Marcus Scaurus from Joppa in Judaea during his aedileship and shown at Rome among the rest of the amazing items displayed. The monster was over forty feet long, and the height of its ribs was greater than that of Indian elephants, while its spine was 1-1/2 feet thick.²

Marcus Scaurus transported and displayed the bones in Rome's largest theatre around 64 B.C. Cooper also relates Pliny's note of a washed-up carcass with 120 teeth, each between 9 and 6 inches long, and Pausanias' mention of "an enormous sea monster's skull which was kept at a sanctuary in Asklepios."³ Many other accounts, plus

Breathing Fire?

Job 41:18-21 refers to leviathan's ability to breathe fire. Its "sneezings flash forth light," its mouth emits burning lights and sparks, and its nostrils emit smoke. "His breath kindles coals, and a flame goes out of his mouth" (v. 21). It is tempting to dismiss this, but modern species such as fireflies, bombardier beetles, and electric eels display similarly spectacular abilities. Imagine if all these species went extinct tomorrow. What would a person in the distant future think about our descriptions of creatures that generate their own light, heat, and electricity?

paintings and carvings, convey encounters with monstrous marine reptiles.

What was leviathan? Unfortunately, no living or fossil example seems to provide an exact match, but hints from history support the accuracy of Scripture's leviathan. ●

References

1. Psalm 104:25-26. See Thomas, B. 2010. Why Do Animals Play? *Acts & Facts*. 39 (1): 16.
2. Cooper, B. 2012. *The Authenticity of the Book of Jonah*. Amazon Digital Services, Inc., 19.
3. *Ibid*, 23.

Mr. Thomas is Science Writer at the Institute for Creation Research.



Dinosaur Fossils in Late-Flood Rocks

Evolutionary scientists view Earth's rock layers as a chronological record of millions of years of successive sedimentary deposits. Creation scientists, on the other hand, see them as a record of the geological work accomplished during the great Flood's year-long destruction of the Earth's surface. If that is the case, though, why don't we find dinosaur fossils in the earliest North American Flood sediment layers—why do we find them only in later Flood rocks? The ICR team's recent examination of sedimentary rock layers across the United States and Canada seems to provide an answer.

Deposition of the earliest Flood sediments (the Sauk, Tippecanoe, and Kaskaskia Megasequences) was thickest in the eastern half of the U.S.—often deeper than two miles! In contrast, the early Flood deposits across much of the West are commonly less than a few hundred yards deep, and in many places there was no deposition at all (Figure 1).

It seems the dinosaurs were able to survive through the early Flood in the West simply because they were able to congregate and scramble to the elevated remnants of land—places where the related sedimentary deposits aren't as deep—as the floodwaters advanced. I call this high ground Dinosaur Peninsula. In this way, dinosaurs were able to escape burial in the early Flood.

However, later in the Flood (during deposition of the Absaroka and Zuni Megasequences) things changed dramatically. Pangaea, the former supercontinent made up of all of today's continents, began to break up. This change in tectonics, combined with increasing water levels, caused great changes in the ways that the rock layers were deposited. Violent, tsunami-like waves washed across western North America while virtually no sedimentation was occurring in the East. This is a complete reversal of the pattern observed earlier in the Flood.

Rock sequence data show that more

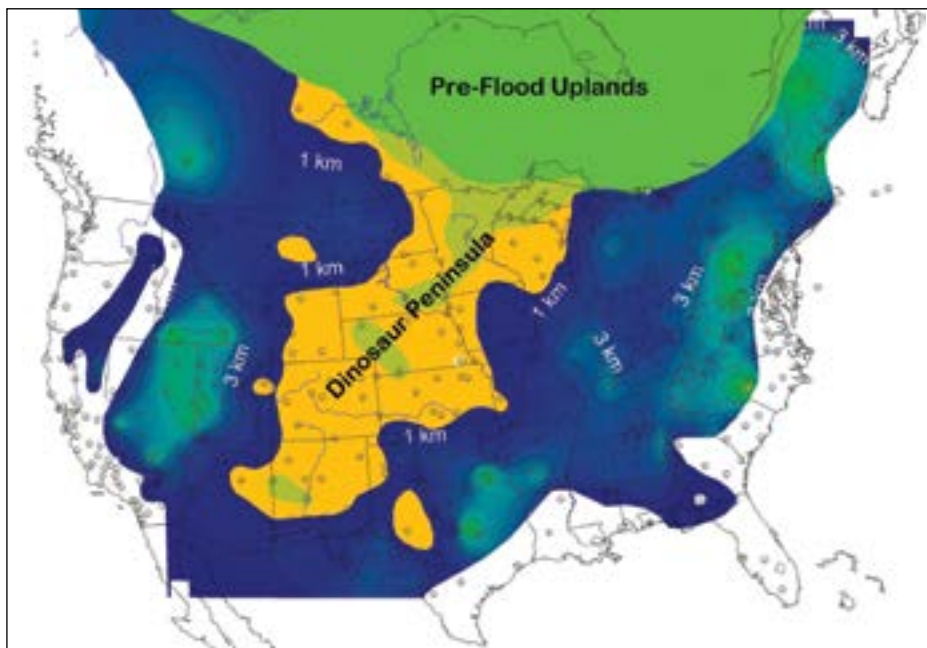


Figure 1. Thickness map of the early Flood sediments (Sauk, Tippecanoe, and Kaskaskia Megasequences combined) showing the possible extent of the pre-Flood Dinosaur Peninsula and Uplands. The darkest colors represent the thinnest rock layers. The pre-Flood land masses were identified by the thinner sediments that only partially covered these areas during the first part of the Flood. The Dinosaur Peninsula was a lower-elevation area where swamps and dinosaurs dominated. The Uplands were a higher, hilly area where large mammals and humans may have lived.

than three miles of sediment rapidly accumulated across the American West during the Absaroka and Zuni Megasequences.¹ This apparently overwhelmed and buried the Triassic, Jurassic, and Cretaceous dinosaurs that couldn't escape the Flood. As the waters rose, Dinosaur Peninsula began flooding from south to north. We also find the largest herds of dinosaurs, in the form of dinosaur fossil graveyards, in the Upper Cretaceous system sediments in northern Wyoming, Montana, and Alberta, Canada. It's as if the dinosaurs were fleeing northward up the peninsula as the waters advanced from the south. By day 150 of the Flood (Genesis 7:24), even the Uplands area to the north, in present Canada, was covered by the floodwaters (Figure 1).

In his book *Digging Dinosaurs*, American paleontologist John R. (Jack) Horner reported the discovery of a huge dinosaur graveyard—over 10,000 adult *Maiasaura* in a small area, and yet no young were mixed

in with them.² What could have caused this odd sorting? In a Flood model, this is easily explained: The adult dinosaurs were likely stampeding away from the imminent danger of raging floodwaters; their young could not keep up and became engulfed in some lower part of the peninsula.

More research is being done on the stages of the Flood and the order in which the continents were submerged. But each answer provides new insight into the great catastrophe that forever altered the topography of our world. ●

References

1. The data are taken from stratigraphic rock columns, outcrops, and holes bored deep in the earth to examine the different rock layers. To know the dimensions of megasequences, we have to look at many of these columns across a given area.
2. Horner, J. R. and J. Gorman. 1988. *Digging Dinosaurs*. New York: Workman Publishing.

Dr. Clarey is Research Associate at the Institute for Creation Research and received his Ph.D. in geology from Western Michigan University.





Does Teaching Recent Creation Hinder the Gospel?

A:

Christians who oppose recent creation often assert that faith in Christ does not require a belief in recent creation, and they argue that insisting that the world is only thousands of years old hinders sharing the gospel by adding an unreasonable barrier to belief. But believers should consider two reasons why recent creation actually *supports* the gospel.

The Greek word translated as gospel means “good news.” Because we are all sinners, we have separated ourselves from our holy God. Despite this, He loves us and seeks to bring us into a close relationship with Him.¹ Since God is just, He must deliver punishment to guilty sinners on the Day of Judgment—unless He were to place their punishment on a guiltless substitute willing to pay the death penalty for them. The Lord Jesus paid that penalty in full, then He rose from the dead to offer us eternal life with Him. We sinners can now seek the Lord’s forgiveness, trusting Christ to remove our sins and restore fellowship with our Maker.²

How does belief in a world that is thousands, not millions, of years old support this Good News? The first reason is that when Christians believe in a recent creation,

they show complete confidence in the accuracy and authority of all of God’s Word, including its history. Telling unbelievers that they do not have to believe *certain* miraculous events described in Scripture—like creation, the global Flood, or God parting the Red Sea—but they *do* have to believe in the miracle of Christ’s resurrection sends a confusing message. On what basis should a person select which events actually happened and which supposedly did not? Since God knows everything, we can believe all the miracles and other historical occurrences He recorded in Scripture. After all, the same New Testament authors who saw and described the resurrected Lord also referred to recent creation, Adam, the Flood, and the Red Sea parting as real events.^{3,4,5}

The second reason why recent creation supports the gospel is that it establishes the proper foundation. The only reason our salvation would require Jesus’ death is if our sins really earn eternal death. And they do: “Therefore, just as through one man sin entered the world, and death through sin, and thus death spread to all men, because all sinned....”⁶ Sin and death affect more than mankind, “for we know that the whole creation groans and labors with birth pangs

together until now.”⁷ But if the whole creation is billions of years old, then according to the evolutionary interpretation of the fossil record, uncounted numbers of animals were dying long *before* Adam’s sin and its subsequent death penalty.⁸ Genesis 1:31 says the world was “very good” before the Curse of death, not filling up with dead animals millions of years before Adam arrived.⁹ The very foundation for Jesus paying our death penalty is a recent creation that was cursed *after* the sin of Adam, who lived thousands, not millions, of years ago.

Can a person believe in Christ and not believe in biblical creation? Yes, but we should always be “bringing every thought into captivity to the obedience of Christ,” whose Word tells us both the true history of the world and the very Good News.¹⁰ ●

References

1. John 3:16.
2. Romans 10:9.
3. Luke 1:70. Note Zacharias’ mention of the prophets having been active since the world began, not billions of years after some Big Bang.
4. 2 Peter 3:5-6.
5. 1 Corinthians 10:1-2.
6. Romans 5:12.
7. Romans 8:22.
8. Genesis 3:19.
9. The vast majority of fossils formed from Noah’s recent Flood, which occurred long after the Curse.
10. 2 Corinthians 10:5.

Mr. Thomas is Science Writer at the Institute for Creation Research.

In the wake of Hurricane Sandy, a house stood in ruins. What destroyed it? Did Sandy “total” it, or was it structurally defective well before the storm struck? Surely forensic science can help answer such questions, since it is supposed to be an objective process that seeks out and finds the truth about past events—and specifically cause-and-effect events. But even forensic science can be frustrated when selective biases or subjective agendas corrupt the analysis of the facts.

Hurricane Sandy, the largest Atlantic hurricane in U.S. history, wreaked havoc in October 2012.¹ Scores suffered the complete destruction of their homes, and hundreds of others filed flood insurance claims.

In the aftermath, some insurance companies disagreed about what caused the property damage. The claimed losses led to forensic investigations and more than 1,000 lawsuits. Federal Judge Gary Brown strove to resolve many disputes:

Two years ago [in 2012], the crushing force of Hurricane Sandy devastated large areas of this judicial district. While much has been done to facilitate recovery, assistance has not been consistent or timely, leaving some homeowners behind—even those who properly paid for flood insurance. This Court has invested significant resources in an effort to facilitate efficient resolution of the more than 1,000 cases arising from Hurricane Sandy.²

The trial judge described the insurer’s chicanery in refusing to approve payment of legitimate claims as a series of “reprehensible practices,” rationalized and masquerading as “peer review.”

Specifically, the judge said the “disguise of peer review” was being used to revise and even reverse the forensic facts so that insured homeowners were procedurally abused, in clear violation of court orders to produce records relevant to proving or disproving the insureds’ damage claims.²

An expert had inspected one storm-damaged home, and his original report (issued December 9, 2012) indicated that the home was structurally damaged “by hydrodynamic forces associated with the flood event of October 29, 2012,” and that “repair of the building is not economically viable” (i.e., it was totaled).²

However, the insurance carrier wrongfully withheld this report and instead produced a substitute report (dated January 7, 2013) that said the home “was not structurally damaged by hydrodynamic forces...associated with the subject flood event” because structural

problems were “caused by long-term differential movement of the supporting soils at the site and long-term deflection of the building framing.”²

Based on the substitute report, the insurance company refused to pay the flood damage claim. What caused the inspection report’s revision?

At the hearing, [the report’s author] and a second witness explained that the radical changes in his report resulted from a “peer review process,” though the description of that process varied greatly...[U]nder the guise of “peer review,” [the reviewing peer who did not do any actual research] transformed the report to indicate a conclusive *absence* of storm damage.²

In other words, the reviewer sabotaged the parts most unfavorable to the insurance company. Reliable testimony proved this kind of “peer review” abuse was commonplace in the industry. Labeling it “misleading”

Judge Brown issued a remedial and punitive sanctions ruling.²

Is this kind of peer review abuse relevant to origins science?

Yes. Like the above peer review abuse example that censored and corrupted the transmission of forensic facts, agenda-driven peer review abuses can taint science journals.

A recent article in *Nature* described peer review *approval* scams.³ Similarly, peer review *disapproval* scams reject creation scientists’ research, due to evolutionary biases. This is essentially suppressing the truth in unrighteousness (Romans 1:18-23; 3 John 1:9-10; 1 Timothy 6:20).

So, next time you hear someone faulting a creation scientist for not having research journalistically approved by Darwinists’ “peer review” process, remember that peer review processes can be selectively abused and corrupted by what Judge Brown called “reprehensible practices.” ●

References

1. In America, Hurricane Sandy caused 147 direct deaths, at least 75 indirect deaths, and about \$70 billion in property damages (as estimated in March 2014). Sandy’s diameter reached 1,100 miles, with storm surges that caused tidewater flooding up to 7.9 feet above normally dry ground. See U.S. NOAA, National Weather Service, “Hurricane/Post-Tropical Cyclone Sandy, October 22-29, 2012” and the National Hurricane Center’s Tropical Cyclone Report, both posted at www.nhc.noaa.gov, accessed December 1, 2014.
2. *In re Hurricane Sandy Cases (Raimey & Raisfeld v. Wright National Flood Insurance Company)*, 2014 WL 5801540, *1, *3 (E.D.N.Y. 2014) (Gary R. Brown, U.S. District Judge).
3. Ferguson, C., A. Marcus, and I. Oransky. 2014. Publishing: The peer-review scam. *Nature*. 515 (7528): 480-482 (analyzing “peer-review rigging in recent years”).

Dr. Johnson is Associate Professor of Apologetics and Chief Academic Officer at the Institute for Creation Research.



BUILT AND GUARDED BY GOD



THAT'S A FACT

A long-time Institute for Creation Research supporter recently lamented the decline of solid Christian organizations once their founders passed away. We were discussing Christian colleges, and it was rather disheartening to consider how many good schools—initially established on biblical principles with an unbending commitment to the inerrant Word of God—had slowly succumbed to secular pressures and surrendered to evolutionary worldviews. “But they started out as seminaries!” the donor exclaimed. “How could they stray so far from their biblical roots?” That’s a very good question. Perhaps a personal story will shed some light on the issue.

When I moved my family to Dallas to join ICR in 2007, I was surprised to learn about the poor soil conditions here that often cause severe foundation problems. Coming from California, I thought I had left shifting earth behind me. But the high clay content in north Texas soil acts like a sponge, expanding and contracting as moisture levels change, and these upheavals can wreak havoc on concrete foundations. When I asked the builder what could be done to prevent such problems, I was told to water my foundation. “Water...my what?” I asked incredulously. “If you don’t guard against large swings in moisture,” the builder solemnly intoned, “your foundation will crack and the house will fail.” Suffice it

to say, with hose in hand, I have faithfully guarded my foundation ever since.

These two seemingly disconnected events reveal great biblical truths that must be present to keep any Christian organization on track. As the psalmist declared, “Unless the LORD builds the house, they labor in vain who build it; unless the LORD guards the city, the watchman stays awake in vain” (Psalm 127:1). God must be involved in *both* the building and the guarding. While a solid foundation is the most important element of any building (or ministry), it must be guarded to keep the enemies at bay. Otherwise, failure or a sad surrender is inevitable.

ICR’s founder and my grandfather, Dr. Henry Morris, passed on to glory nine years ago this month. He left a marvelous legacy built on a foundation of prayer and marked by an extraordinarily fruitful life of service to the Lord in the defense of His Word. But now that our founder is no longer with us, is ICR doomed to follow the same fate as other good Christian ministries, colleges, and seminaries before it? That question can only be answered by considering the work of ICR’s ministry in the years since. As Christ counseled His disciples, “By their fruits you will know them” (Matthew 7:20).

And by God’s direct blessing, there is plenty of visible fruit. The ICR science staff continues to uncover remarkable evidence of the Bible’s accuracy and remains the fountainhead for most creation science

research in the world today. Online education programs offered through ICR’s School of Biblical Apologetics have equipped thousands of Christian leaders and laymen to effectively influence their world with the truth of Scripture. ICR’s suite of websites, the first of their kind dedicated to biblical scientific creationism, hosts millions of visitors annually, while our *That’s a Fact* series of online creation video programs has been viewed nearly eight million times by people from 150 countries over the last two years. Every page of our monthly *Acts & Facts* magazine and quarterly *Days of Praise* devotional, offered free of charge to hundreds of thousands of people, contains information committed to biblical authority, while dozens of significant new books and DVD resources, like the groundbreaking *Unlocking the Mysteries of Genesis* DVD series, have been produced that glorify the Creator.

ICR still follows the distinctive tenets established by my grandfather and built on the perfect Word of God. God has guarded our mission in the years that followed him and has guided our leadership as we remain true to His Word. I am certain our founder would be well pleased with the ICR ministry that exists today—but it is God’s pleasure we seek most of all. How about you? ●

Mr. Morris is Director of Donor Relations at the Institute for Creation Research.



PRAYERFULLY

CONSIDER

SUPPORTING

ICR

— GALATIANS 6:9-10 —

Through

- Online Donations
- Stocks and Securities
- Matching Gift Programs
- CFC (Federal/Military Workers)
- Gift Planning
 - Charitable Gift Annuities
 - Wills
 - Trusts

Visit icr.org/give and explore how you can support the vital work of ICR ministries. Or contact us at stewardship@icr.org or **800.337.0375** for personal assistance.

ICR is a recognized 501(c)(3) nonprofit ministry, and all gifts are tax-deductible to the fullest extent allowed by law.

From Atheist to Creationist

JERRY BERGMAN, P.H.D.

I have always loved science, partly due to the influence of my engineer father, who was heavily involved in research and development. While growing up, my free-time diet consisted of Mr. Wizard, Disney nature films, and doing science experiments.

At Wayne State University, where I earned my bachelor's, master's, and Ph.D. degrees, I was exposed to evolution. Influenced by my atheist father and my professors, I accepted this worldview, as did most of my peers. We also accepted the atheist philosophy that came with it. The university invited a number of speakers to lecture on religion, at least tangentially, all of whom were quite negative toward Christianity. One even stressed that we have given Christianity 2,000 years to fix up the world, and it was high time to try atheism.

As I became more involved in the atheist movement, I got tired of hearing that all the problems in the world were the fault of Christianity and that if we got rid of all the Christians, the world would be a wonderful place. What especially bothered me was that my atheist peers were determined to suppress Christianity by any means, legal or illegal—first by banning it from the public square, then in the private domain. Atheists seemed to feel that the ends justified the means, so they ruthlessly sought to crush Christianity. I soon realized this goal was evil because in the end it always did more harm than good—and yet it has been tried in so many places.

As I studied evolution (the doorway to atheism), it eventually became apparent that the theory has some major problems. The first example I researched in detail was the “vestigial organ” claim. There are over 100 claimed vestigial organs. These are supposedly non-functional evolutionary “leftovers,” yet I found uses for all of them. I went on to study the fossil record, and then I examined the natural selection claim, concluding that natural selection only explains the *survival* of the fittest, but the essential problem in Darwin's day, and today, is the *arrival* of the fittest.

Sexual selection, instead of explaining sexual differences between males and females, actually serves to *reduce* deviation from the average. It does not cause evolutionary development that *requires* deviation from the average. Research that documents this conclusion includes a computer program that combines the faces of many women to produce the most beautiful women; ugliness is viewed as a deviation from this average and thus is selected against.

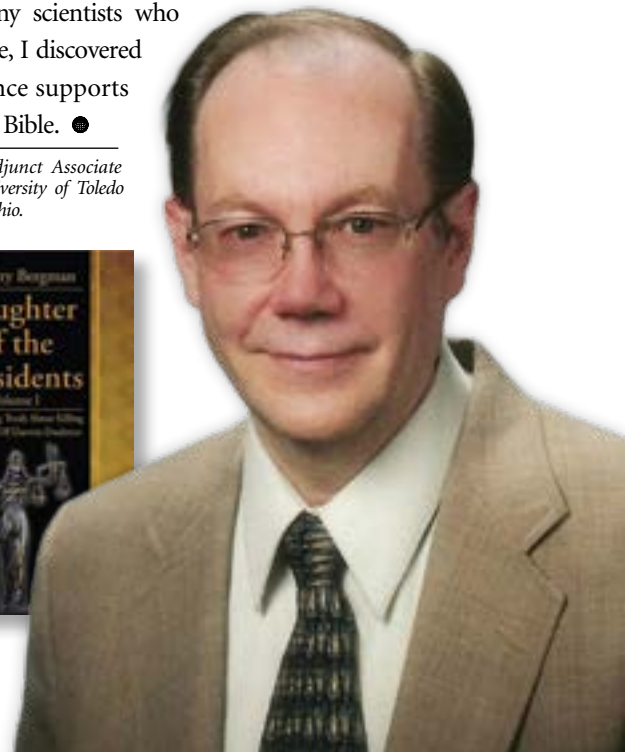
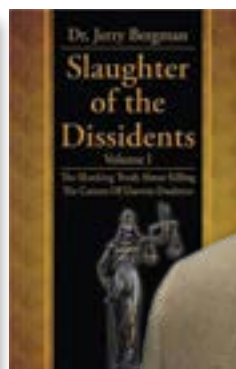
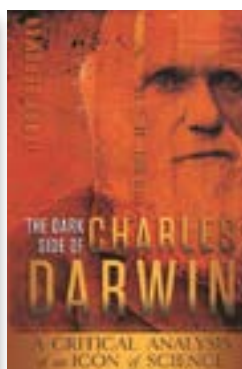
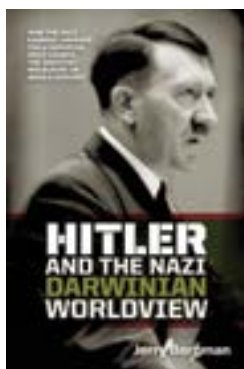
After exploring all of the major arguments for evolution, I eventually concluded that Darwinism has been falsified on the basis of science and realized that the evidence demands an intelligent creator.

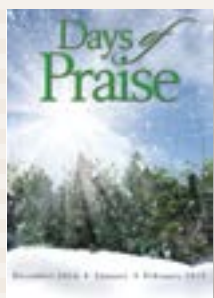
The biblical age question was more difficult to deal with, but in my mind a major factor that supported a young creation was the profound evidence for genetic degradation. It is well documented that each new generation of humans adds about 100 to 150 mutations (genetic errors) per person, and an estimated 99.9 percent of these mutations are near neutral, harmful, or lethal. Consequently, there is no way that life could have first evolved 3.5 billion years ago and still be around today because life would have become extinct long ago from genetic meltdown and cell catastrophe.

Another important finding that supports the creationist view was the discovery of soft tissue in dinosaur bones that were claimed to be over 65 million years old. This is a problem because destructive forces such as cosmic rays would have destroyed soft tissue long ago.

The evidence against Darwinism was a critical factor in my acceptance of creationism, which opened the door to my acceptance of Christianity, biblical reliability, and a young-earth creation worldview. Like many scientists who came before me, I discovered that the evidence supports the truth of the Bible. ●

Dr. Bergman is Adjunct Associate Professor at the University of Toledo Medical College in Ohio.





We so appreciate your work in creation research! Your work honors Him—“thinking His thoughts” after Him. We use *Days of Praise* almost daily and are so stimulated and challenged by it. “He being dead yet speaketh” we often say of [ICR founder] Dr. Henry [Morris]!

— D.D.

Thank you for the fantastic article “Job’s Icy Vocabulary” [in the December *Acts & Facts*]. I’ve read it at least three times now! My mind-blowing thought is, “what if his is the only eyewitness account of the Ice Age?” God has preserved that book for sure, and I like that the vocabulary in it might be “forensic evidence of global climate conditions.”

— M.N.



Thank you so very much for the unexpected gift of the book in response to our recent donation. It was such a pleasant surprise! I am looking forward to reading it. My own father’s interest and support in the work of ICR greatly influenced my childhood and my own passion for science. As an adult now, it is an exciting privilege to continue to support your ministry. As a public school science teacher, I rely heavily on your resources to educate myself on how God’s designs work so that I am better prepared to counter the challenging questions which my colleagues and students pose.

I am loving the *That’s a Fact* videos! I regularly share them with my own children at home. I love these short clips, very clear and manageable for kids but academic enough for adults. I check



the website often to see the newest ones and have referred friends to the site. Those who maybe aren’t ready to sit and read *Acts & Facts* yet will usually sit for a three-minute video. Great idea!

I will continue to pray for the ministry and for the scientific community to embrace our God! I pray that I will have many more opportunities to give to your incredible ministry.

— A.W.



We recently completed the series *Unlocking the Mysteries of Genesis*, together with our married children and their children along with some of their friends. The group ages ranged from 12 to 74 years and numbered from 15 to 20 persons. We have been meeting for one and one-half years studying the Bible and how it practically applies to our

everyday lives. We feel one of the best ways to study God’s Word and His wonderful creation is in a family setting. The group was unanimous in its appreciation of the series. It gave great insight, generated thoughtful discussion, and provided all with practical knowledge. We have supported ICR for many years and continue to be blessed by the fruit of your work.

— G.S.

We want to thank you very much for all your work in the area of creation research. We homeschooled for 15 years and made use of your material. Glad to see that you continue to produce more and more for homeschoolers. We currently receive *Acts & Facts* and enjoy it very much. I need to look around on your website more and check out your other offerings.

— G.B.

Just wanted to add a few words with this order...*Days of Praise* devotionals are the very BEST that I’ve ever read. Every day they mean so much to me!!

— A.B.



I applaud the effort ICR invested in the DVD series *Unlocking the Mysteries of Genesis*.

It is truly an impressive recitation of the creation and should be a veritable bane to

those who insist that all things were produced by time and chance and that “man is the end of all things.” Since I am hearing impaired, I was quite disappointed to discover that the DVDs were not closed captioned. Perhaps as you produce copies with foreign language subtitles, you could add English to the series. It would be a great boon to folk like me and, while I understand that the Millennials are the target audience, I imagine that some of them may suffer some hearing loss due to very loud music. This group would also benefit from closed captioning. I am an avid follower of your *Acts & Facts* magazine and look forward to each issue. Keep it coming!

— B.F.V.

Editor’s note: The new edition of *Unlocking the Mysteries of Genesis* contains closed captions and subtitles not only in English, but also in Spanish, Chinese, and Korean.

Have a comment? Email us at editor@icr.org or write to Editor, P. O. Box 59029, Dallas, Texas 75229.

Note: Unfortunately, ICR is not able to respond to all correspondence.

Follow. Learn. Share.



88,251 likes and counting...
help us reach 100,000 in 2015.



ICR Resources

Please add shipping and handling to all orders. Offer good through March 31, 2015, while quantities last. To order, visit ICR.org/store or call 800.628.7640.



Creation Basics & Beyond

An In-Depth Look at Science, Origins,
and Evolution

BCBAB

\$9.99

Also available through Kindle, NOOK,
and iBookstore.

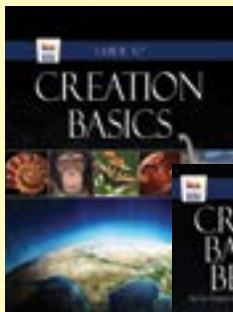
Creation Basics Bundle

SCBB

\$29.98

Guide to Creation Basics is filled with full-color illustrations and information from science, history, and the Bible that shows God's ingenuity, power, and care in creating our world.

Also available through Kindle, NOOK,
and iBookstore.



Unlocking the Mysteries of Genesis Student Guide

(DVD series sold on page 2.)

Get the companion Student Guide for only

\$14.99!

BUTMGSG

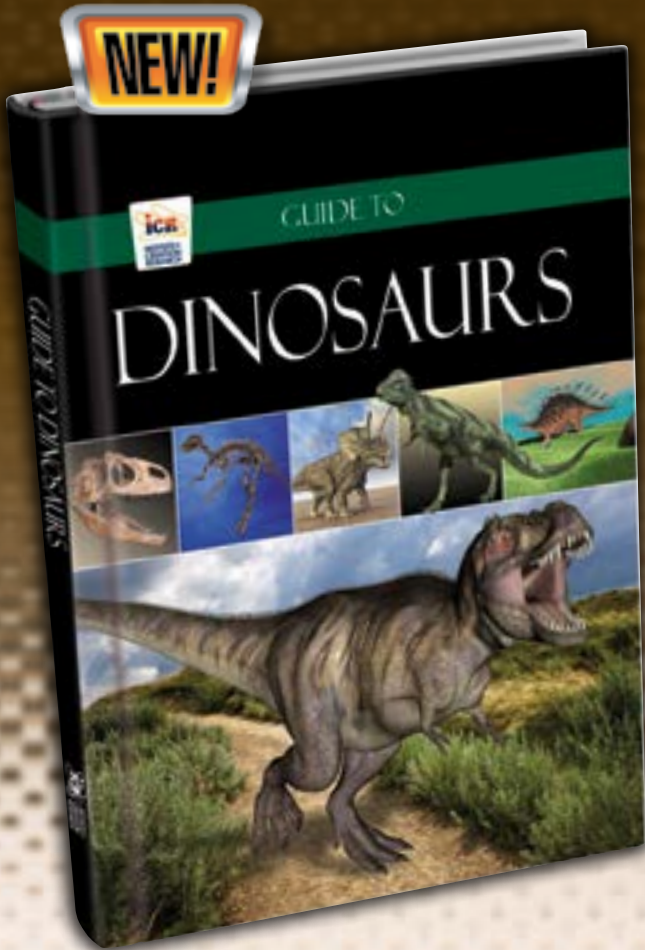
Buy two for \$22.00!

(regular price \$29.98)

SBUTMGSG

Filled with dozens of educational activities and cool facts about creation, our new Student Guide equips viewers with even more knowledge about every episode of *Unlocking the Mysteries of Genesis*. Designed to provide exactly what you need to make creation science a part of your child's curriculum!

Perfect for Dinosaur Fans of All Ages!



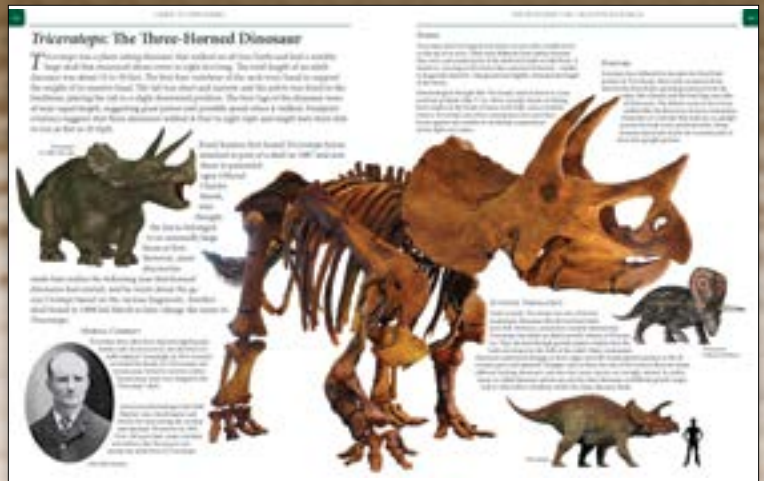
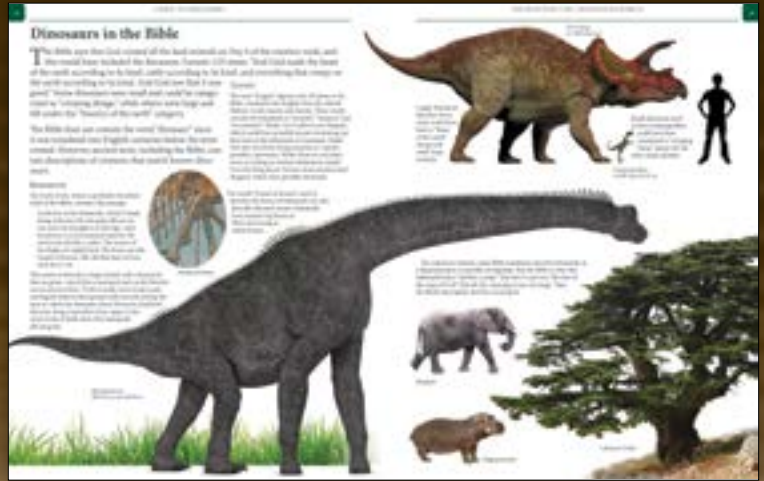
The most family-friendly biblical dinosaur book ever created!

Dinosaurs were amazing creatures. We're learning more about them all the time, but there are still many questions. How do they fit with the Bible? Are they really millions of years old? Did they live at the same time as humans? Were dinosaurs on the Ark? Why are they extinct today? Examine the evidence and discover the real dinosaur story.

Guide to Dinosaurs

\$19.99

BGTD – Hardcover
Plus shipping and handling



Buy all three "Guide to" books. Hardcover

Perfect for homeschoolers or anyone who wants a detailed, easily understood science resource.

Plus shipping and handling

To order, call **800.628.7640** or visit **ICR.org/store**



LIVE WEBCAST!



www.ICR.org/webcast

Live-streamed in both English and Spanish.

FEBRUARY 6 & 7, 2015

Friday — 7:00 p.m. – 9:00 p.m.

Saturday — 8:00 a.m. – 12:30 p.m.

CALVARY CHAPEL GOLDEN SPRINGS
DIAMOND BAR, CA

www.calvarygs.org

909.396.1884.



P. O. Box 59029, Dallas, TX 75229
www.icr.org

S P E A K E R S



DR. HENRY MORRIS III



DR. JASON LISLE



BRIAN THOMAS

CREATION
— VS. —
EVOLUTION

C O N F E R E N C E



PASTOR RAUL RIES



LARRY POWERS