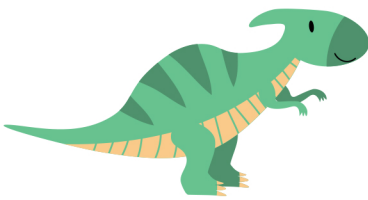


Earth is called the Goldilocks Planet because it's just right for life. Its just-right distance from the sun makes it not too hot and not too cold. Earth is also tilted at enough of an angle to cause our changing seasons—fall, winter, summer, and spring. Did you also know. . .

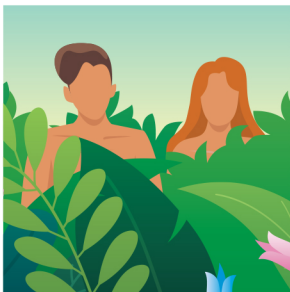
- ✓ The Lord Jesus made the sun, moon, and stars on Day 4 of the creation week. But He spent most days of the creation week perfecting Earth.
- ✓ Earth's temperatures allow water to remain in liquid form in most places of the world. People and animals couldn't live without water.
- ✓ Life has not been found on any other planet. And no known planet other than Earth has the ideal conditions for life.
- ✓ Earth's mountains, rocks, oceans, and trees—and the living creatures dwelling there—reveal God's kindness, power, and creativity each and every day.

On which creation day were each of these created? Read Genesis 1 for clues.

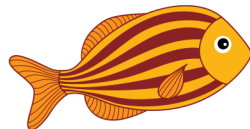


1. \_\_\_\_\_

2. \_\_\_\_\_

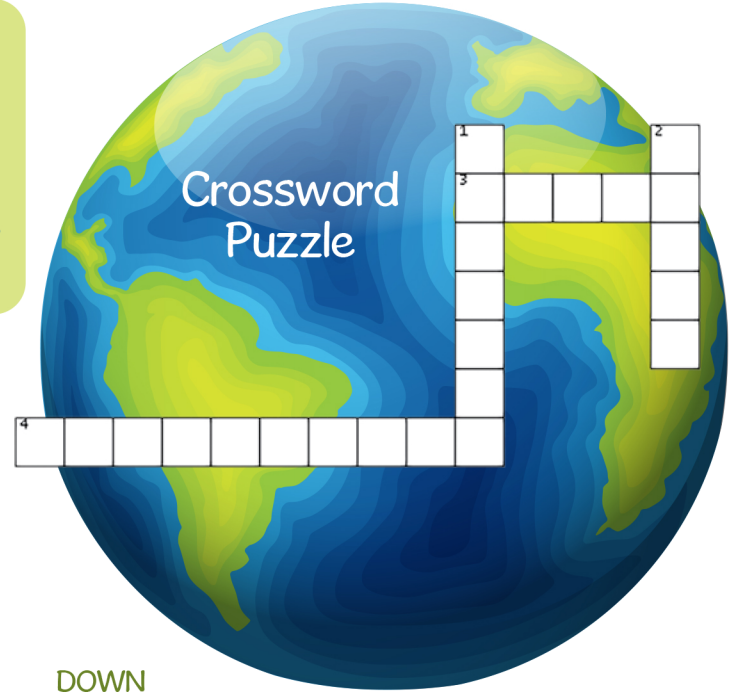


3. \_\_\_\_\_



4. \_\_\_\_\_

5. \_\_\_\_\_



## Crossword Puzzle

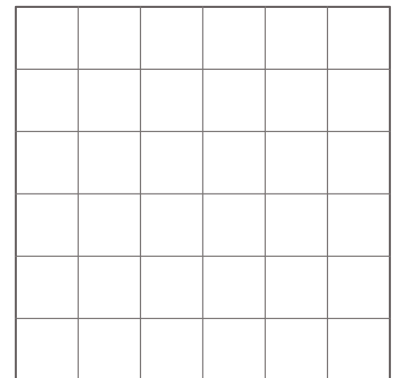
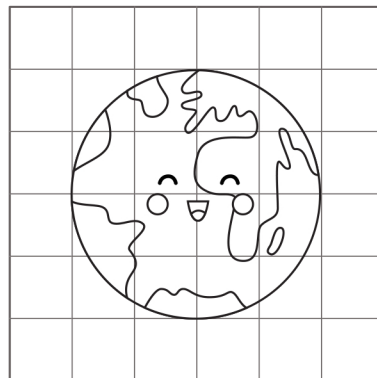
### DOWN

1. Earth is tilted at enough of an angle to cause \_\_\_\_\_, like summer and fall.
2. God made grass and trees grow on the earth on Day \_\_\_\_\_ of the creation week (Genesis 1:11–13).

### ACROSS

3. \_\_\_\_\_ is our home and the third-closest planet to the sun.
4. Earth is known as the \_\_\_\_\_ Planet because it's just right for life.

Copy the picture in the squares on the right and color.



Day of creation: 1. Day 6; 2. Day 2; 3. Day 5; 4. Day 5; 5. Day 5  
 Crossword puzzle: 1. seasons, 2. three, 3. Earth, 4. Goldilocks